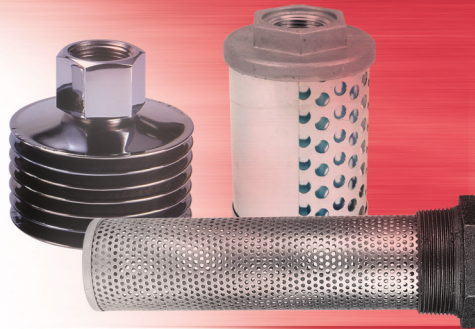




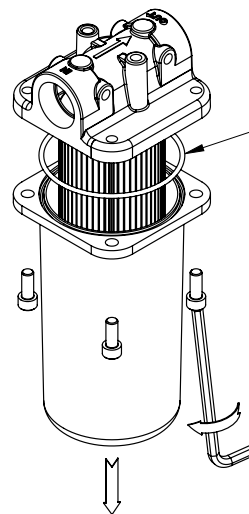
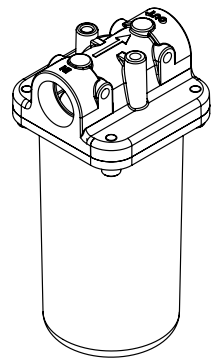
Fluid Power Specialist



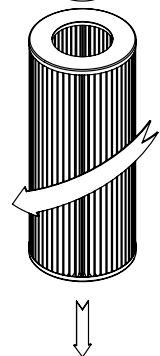
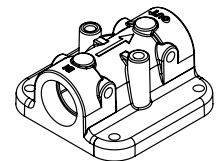
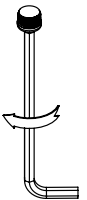
SERVICING DH SERIES FILTER

This is a suggested procedure to change the element in a DH series filter.

1. Remove the S.A.E. drain plug in the bowl of the filter to allow oil to drain from bowl into your drip pan or container.
2. With an allen wrench loosen the 4 bolts that attach the bowl to the filter housing. Remove the bowl carefully making sure to keep upright and dump any residual oil into your contain- er. Make sure you clean any sludge from the bottom of the bowl.
3. Grab the element at the base and simultaneously turn and pull to slip the element off the male spigot on the filter head.
4. If the DH filter has paper elements dispose of the element properly. If the DH filter has a wire cloth element you can clean and re-use. See (technical bulletin TB.FIL03.708) for tips on cleaning the element.
5. You can replace the seal between the filter head and bowl if necessary. When you purchase a replacement element it comes with a seal to slip over the male spigot on the head. Also don't forget to inspect the drain plug seal to make sure that it appears to be in good condition before re-using.
6. To reassemble the filter, simply reverse the procedure.
7. Make sure when assembling the filter that the o-ring is properly seated in the groove of the bowl.
8. The torque on the bolts which attach the bowl to the filter head is 10 ft. lbs.



REPLACE WITH
DH-1200-CR



WIRE MESH



CELLULOSE



SYNTHETIC



Scan Code
to Learn More

